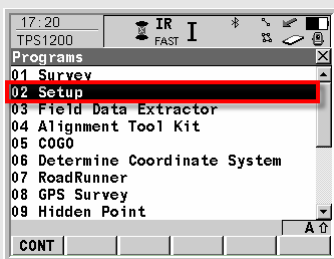


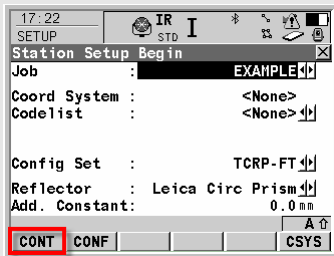
Leica TPS1200 Quick Guide

Setup - Known BS Point

General steps to orient the instrument by the Known BS Point method from the Setup application.

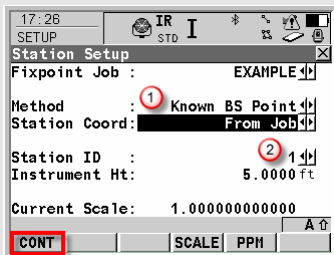


1. From the Programs menu, select the **Setup** application.



2. Select the Job (or create a new one), and verify other settings such as Codelist, Configuration Set, etc.

Press **F1 CONT**.

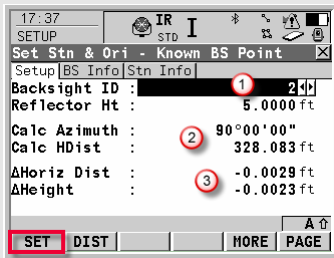


3. Verify that the Fixpoint [Control] Job is properly selected. In this example they are the same.

(1) Select Known BS Point, From Job as Method and Station Coordinate.

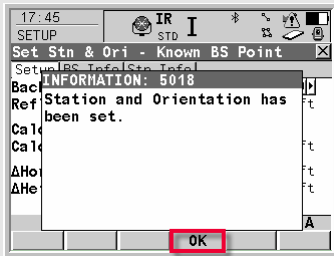
(2) Enter the setup Station ID and Instrument Height.

Finally, Press **F1 CONT** to select the Known BS point.



4. (1) Select the point for the Known BS & enter the Refl. Ht.
- (2) Review the Calc. Azimuth & HDist.
- (3) Sight the point, Press **F2 DIST** to measure.
Inspect the position & height deltas to assure that the proper BS point was selected.

Finally, Press **F1 SET** to set the orientation of the instrument.



5. Press **F4 OK** to accept the Information message. You will now be returned to the TPS 1200 Main Menu, and ready to begin the desired application (e.g. Survey, Stakeout, etc.).