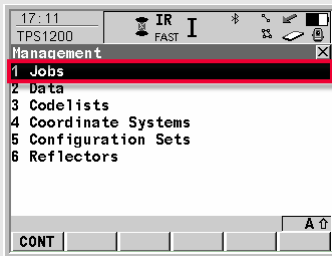


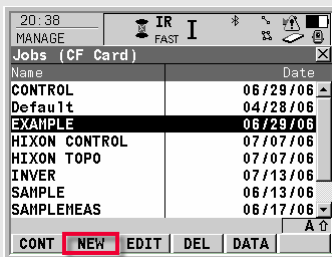
# Leica TPS1200 Quick Guide

## Create a New Job

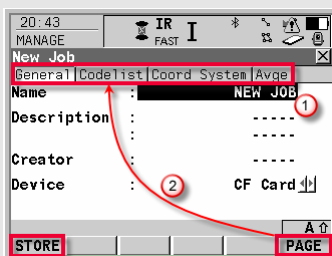
General steps to create a new job on the TPS1200



1. From the Main Menu, select **3 Manage...**  
Select **1 Jobs** from the Management menu.

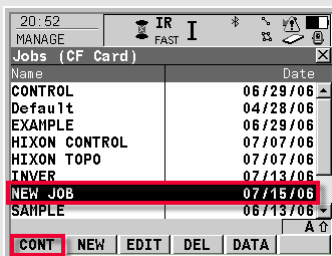


2. From the Jobs display, press **F2 NEW**.



3. (1) Enter a Name for the Job.  
(2) Use **F6 PAGE** to toggle between the pages to set the proper Codelist, Coordinate system, and Averaging method.

When completed, press **F1 STORE**.



4. The job, NEW JOB, which was just created, is now on the job list.

Press **F1 CONT** to make NEW JOB the current job.

You will now return to the Main Menu and are ready to start the next activity.