

# Leica System 1200

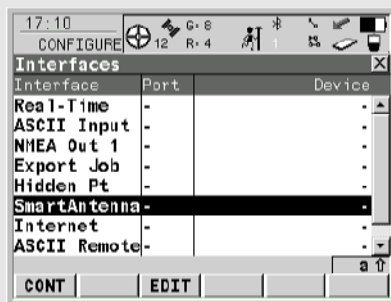
## Quick Guide

### How to connect the ATX1230 to the RX1250 via Bluetooth

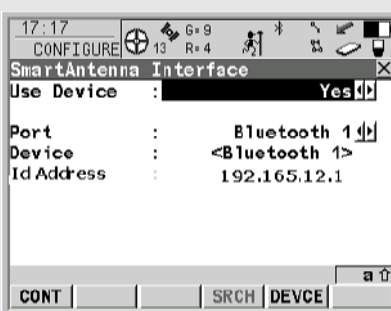
General steps to connecting the ATX 1230 to the RX1250 via Bluetooth



1. From the Main Menu, select **5 Config...**, then select **4 Interfaces...** from the Configuration Menu.

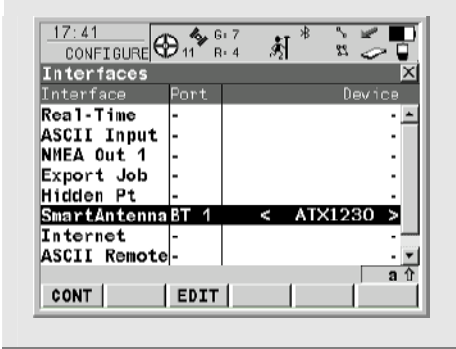


2. From the Interfaces Menu, select the **Smart Antenna** interface and press **F3 EDIT**.



3. (1) For the **Use Device** option select **YES** and for the **Port** option select **Bluetooth 1**.  
(2) When completed, press **F5 DEVCE** (Device), select **AXT1230** for device and press **F1 CONT**.  
(3) Next, press **F4 SRCH** (Search). When the **Search Bluetooth Device** display appears, select the **AXT1230**, and then press **F1 CONT**.

**Note:** There is now a number present for the ID Address.



- 4. Press **F1 CONT**. A message should appear stating **Bluetooth Connection OK**. You are now ready to survey with your Smart Antenna!