

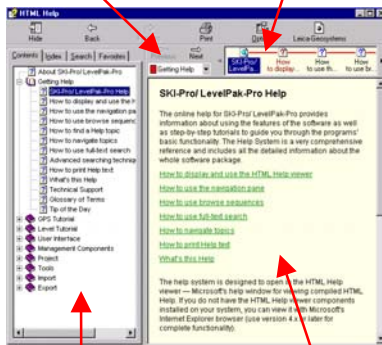
SKI-Pro's Online-Help...

With SKI-Pro 2.5 and LevelPak-Pro 1.0, a new HTML based help system has been introduced. It offers you the modern look and feel of Internet browsers and provides you with many useful bits of functionality you are used to from the Internet Explorer.


The HTML Help Viewer

The HTML Help viewer is a tri-pane window presenting you with a navigation pane to the left and a pane for displaying help content and selecting browse sequences on the right. The Contents tab is synchronised with the topic pane, so that users never lose their place.

drop-down list of browse sequences browse sequence bar



navigation pane topic pane


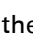
Depending on how you prefer to work you can open or close the left-hand tabs (**Contents**, **Index**, **Search** and **Favourites** tab) in the navigation pane. When you hide the navigation pane , the right-hand topic pane is maximised so you can see as much topic content as the size of the HTML Help viewer allows.

Just like within an Internet browser, the HTML Help viewer offers you **Back** and **Forward** buttons for returning to a previously viewed topic.

The **Options** button opens a menu with selections for showing/hiding the navigation pane, going back and forward to previously viewed topics, stopping a topic or Web page from loading, and refreshing the information displayed in the topic pane. You may also access Internet options from this menu, print topics, or turn search highlighting on or off.

Since the HTML Help viewer uses components of the Internet Explorer browser, it can take you directly to Web sites on the Internet.

The Navigation Pane

The **Contents** tab displays a table of contents. Books  and pages  represent the categories of information in the online help system. When you double-click a closed book, it opens to display its content (sub-books and pages). When you double-click an open book, it closes. When you click pages, you select topics to view in the right-hand pane of the HTML Help viewer.

The **Index** tab displays a multi-level list of keywords and keyword phrases. The keywords are associated with their corresponding topics. In contrast to the pre-structured table of contents, the keywords are intended to direct you to specific topics according to your way of working. If the keyword is used with more than one topic, a **Topics Found** dialog opens so that you can select a specific topic to view.

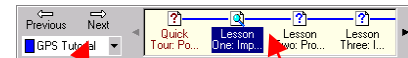
The **Search** tab enables you to search for words in the help system and locate topics containing those words. Full-text searching looks through every word in the Online Help to find matches. When the search is completed, a list of topics is displayed so you can select a specific topic to view.

Since the SKI-Pro/LevelPak-Pro Help system contains an **advanced search functionality**, there are also options to search previous results, find similar words, and/or search **only** topic titles. Phrases to be searched for may be combined by logical operators.

The **Favourites** tab enables you to store a list of your favourite or most frequently used help topics. Whenever you open the Online Help system, you can quickly go to the topics you view most often by selecting them from this tab. To add topics as favourites, click 'Add' when an interesting topic is displayed in the right-hand pane. You can update the list at any time by removing topics you no longer want to mark as favourites.

Browse Sequences

The Online Help system for SKI-Pro/LevelPak-Pro includes a special way of navigating with **browse sequences**. They are intended to guide you through a pre-defined series of topics.



drop-down list of browse sequences browse sequence bar

The HTML Help viewer includes a drop-down list of browse sequences and a browse sequence bar with small icons that represent the topics used with each browse sequence. Use this list or browse sequence bar to navigate topics.

Navigating Topics

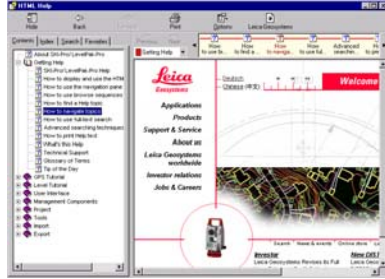
Apart from the navigation pane and browse sequences, you have even more possibilities to navigate topics.

Hyperlinks appear like this. They are inserted into the text body of a topic and take you to related topics for further information. Since the Contents tab is **synchronised** with the topic pane you never lose track of your jumps. Via the **Back** button, you may always return to where you started your investigation.

Some topics include drop-down hotspots. A **drop-down hotspot** appears like this and is clickable text that displays more information in a drop-down list. These drop-downs provide a quick way for you to get information about doing tasks without having to do a lot of scrolling. You only need to click the hotspots you want to read. To close the text, click the hotspot again.

With some links, the destination topic opens in a popup window right on top of the topic pane. **Popup** links appear like this. When you finish reading the information in the popup window, you can close it from view or navigate to any of its links.

Links to the Internet or FTP sites open the Internet browser for you in the topic pane.



You never have to leave the comfortable environment of the HTML help viewer even if you are surfing in the web.

What's this? Help

You can obtain dialog- and window-specific help by making use of the context-sensitive **What's This? Help** available in the application.

If you are stuck in a dialog and do not know how to proceed, press the **F1** button or click the **?** in the upper right corner to get dialog-specific help. You need not close the dialog and search for help in the stand-alone **Contents and Index Help** system. The context-sensitive help puts you right at the answer to your very specific questions.

Thanks to the synchronisation between Contents tab and Topic pane, you never lose track of the overall context a topic is embedded in.

Note that context-sensitive help is not only available for dialogs but also for:

- the main menu entries
- the Toolbar buttons
- the list-bar icons
- the explorer views
- the tabbed views.

With menu entries, toolbar buttons, or icons, press **Shift-F1**. With the **?**-cursor, click the item in question. With any active view just press **F1** or use the **?**-cursor as well.

Print Help Text

With HTML Help it's much more comfortable to print help text.

You can print topics and information right from the HTML Help viewer.

You may choose to print single topics as well as all topics contained in a selected book.

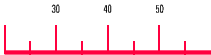
- If a topic includes drop-down hotspots, click the hotspots to display the information before you print.
- If you open a topic via the Index, the Search functionality or as one of your Favourites, only single topics may be printed at once. You may decide on 'Print all linked documents', 'Print table of links' and/ or 'Print to file'.

Online Tutorials

From SKI-Pro V2.5 onwards you will find Online Tutorials in the Online Help.

To start the Post-Processing Quick Tour, open the GPS Tutorial book from the Contents tab.

While working through the tutorial you may jump to interesting bits of further information on special related tasks. Just click the link and be informed without time consuming flipping through thick handbooks.



To enhance navigation on your way through the tutorial make use of the **GPS Tutorial browse sequence**. Even if you clicked yourself deeply into related topics you may easily find your way back via the browse sequence. The lessons you have already completed appear in a different colour in the browse sequence. So it's always easy to pick up the thread again.

The Post-Processing Quick Tour is suitable both for absolute beginners and those who want to repeat a bit of training.

Remember...

- To properly display and use the HTML Online Help you need to have installed IE 4.0 or later.
 - The new HTML Help offers you the look and feel of Internet browsers.
 - SKI-Pro offers both Stand-alone Help and Context-sensitive Help.
 - Links to the Internet are conveniently displayed inside the topic pane.
 - Make use of the Advanced Search functionality and compose your own collection of Favourites.
- Browse Sequences optimally guide you through a pre-defined series of related topics.
 - Make use of the Online Tutorial and see its advantages in comparison to printed text.
 - The Help system is more than answers to questions. It's a compendium of GPS basic and advanced knowledge. With its Internet links it globalises your view and offers a scientific outlook at the same time.