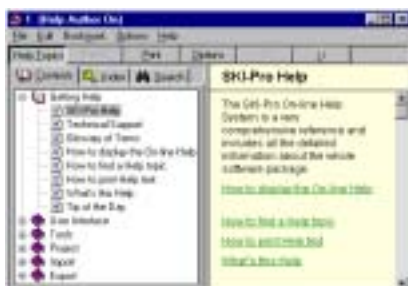


## SKI-Pro's Online-Help...

With SKI-Pro 2.0 a new **Help System** has been introduced. It has many new features which makes looking for Help even simpler and more comfortable to use.

## All in One Window

Instead of the previous v1.1 "two window system", the navigation window now is integrated into the "Help Topics" window as a so-called navigation pane.



Even if you select a topic using the **Index** or the **Search** functionality, switching back to the **Contents** tree-view will always indicate to you in which book the current topic can be found and how deep inside the structure you are. Thus, getting lost in a bulk of topics is nearly impossible.

## Annotations, Bookmarks and the History window

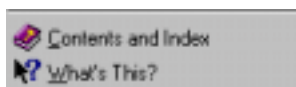
To add your own **annotations** to an existing topic, select the **Annotate...** option from the main menu via **Edit**. An extra-window opens up to type in your own comments. Select **Save** to attach a comment to the current topic. The paper-clip symbol appears indicating an annotation has been defined.

To easily jump to topics you frequently need, you may define **bookmarks** for these topics. Select **Bookmark** from the main menu and selecting **Define...**. The bookmark will be set onto the current topic.

Activate the **History Window** by selecting **Options – Display History Window** to see the sequence of previously viewed topics. In addition to the Back-button, this is an easy way to jump back to a topic by simply double-clicking on it.

## Stand-alone help and Context-sensitive help

There are two choices to use the SKI-Pro Help System:



The **Contents and Index** option allows the Help to be used as a **Stand-alone** system. This allows topics to be found using the **Table of Contents**, via the **Index** or looking for keywords with the help of the **Search** functionality.

The **What's This?** option allows the **Context-Sensitive Help** to be accessed. If, for example, you are stuck in a dialogue and do not really know how to proceed, press the F1 button or click the **?** to get dialogue-specific Help. The cursor changes into Click on the dialogue window and the appropriate Help window will appear. In the navigation pane you can see where, inside the tree-structure, the topic is located.

Note that Context-Sensitive Help is not only available for dialogues but also for:

- the main menu entries
- the Toolbar buttons
- the list-bar icons
- the explorer views.

The advantage of Context-Sensitive Help is that you don't have to think about the correct topic or index entry to find where the help may be available. Simply use the

and the correct help topic will be displayed.

## Links and Pop-ups

In most cases, topics are not independent but are related to other topics or even to the Internet. This is why there are links between topics. These links are shown as text appearing in green and underlined - click on these links to access the topic.

If text appears in green with a dotted underline, then this indicates a Pop-up-explanation is available:



The following links directly access the Internet:

[http://igs.cb.lpl.nasa.gov/igs\\_cb/product/](http://igs.cb.lpl.nasa.gov/igs_cb/product/)

The browser will be opened inside your Help window. With the **Back** and the << and >> buttons you may navigate through the Internet pages like any other browser. Remember that Internet Explorer 3.01 or higher is needed for this!

## Remember...

- Annotations and bookmarks can be defined.
- SKI-Pro offers both Stand-alone Help and Context-Sensitive Help.
- Links and Pop-ups take you to related topics or deeper into a special task.
- Links to the Internet are conveniently displayed inside the main Help window.