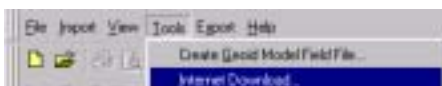


SKI-Pro and the Internet...

Everybody talks about the **Internet**. But how does SKI-Pro interact with the **Internet**? This newsletter will focus on what is possible with SKI-Pro v2.0.

RINEX & Precise Ephemeris

Various data types, which can be used when working with SKI-Pro, are currently available on the Internet, most important is raw data in **RINEX** format and **Precise Ephemeris** data. With SKI-Pro v2.0, an additional tool is accessible from the main menu, which hooks you straight up to the net.



You can choose to download **Observation Data** (these are the RINEX observation files), **Navigation Files** (these are the corresponding RINEX navigation files), **Precise Ephemeris Files** or a combination of these.

Note, that to process raw data from your System 500 rover to a permanent reference station's data available in RINEX format, it is normally not necessary to download RINEX navigation files, as the ephemeris information is already available from your rover data. This is one reason why many Internet sites do not put any navigation files onto their servers.

Also be aware that precise ephemeris information is not immediately available on the Internet. Some organisations therefore provide so called **Rapid Orbits**, which are not as accurate as the final **Precise Orbits**, but are available earlier and often good enough. SKI-Pro also allows the direct download of these.

Whereas for the RINEX data, you can select the site from which you want to download the data. For the ephemeris data, SKI-Pro will automatically take the data from an appropriate place on the net.

The Site List

SKI-Pro v2.0 comes with a long list of pre-defined sites from which you can select the site you need. In the **Add/Edit Custom Sites** tab, you can add your own site URL's to the existing list.

For the pre-defined list of sites, log files are available which contain useful information such as contact information or antenna details.

SKI-Pro offers an even more attractive way to automati-



cally find the closest sites for your working area for download and import.

In the **Tools - Options** dialogue, there is a new **Internet** tab page. This allows you to configure the download to automatically find a given number of stations being closest to a defined coordinate or to find all sites within a given distance.

A Special Tip!

If you hold down **Ctrl** when invoking the **Internet Download** tool, the **Automatic Mode** is invoked and the search start position for the nearest site is taken from the centre co-ordinates of the active project.

If the project covers more than one day then SKI-Pro selects the middle of the project for the date of the RINEX data to be downloaded.

Imagine you have some rover data in your project covering one day. Using this extra feature is certainly the fastest way to get all the closest reference station data directly into your project!

Fully Automated Download and Import

After selecting the site, the download contents and the date, SKI-Pro automatically launches your preferred Internet browser and starts to download the data. You can then import the RINEX data into a Project or the Ephemeris into the Precise Ephemeris Management component.

Remember, you need to have purchased the **RINEX Import Option** to import RINEX data into SKI-Pro.

More Internet...

There are a few more places where SKI-Pro is ready to work with data available on the net, such as **Antenna Files** in either **NGS** or **Bernese** file format or **Global / Regional Ionospheric Models**.

The **SKI-Pro Online Help** also includes some useful links to the Internet. With SKI-Pro v2.0, these links automatically call the installed browser in the main help window.

Remember...

- SKI-Pro v2.0 allows the automatic download of RINEX files and Precise Ephemeris from the Internet.
- Sites can be selected from the provided list or new sites can be added.
- The download procedure is fully automated.