

The Report View

This newsletter focuses on one of the fundamental building blocks of SKI-Pro – the **Report View**. It is used wherever lists of data or information is displayed. Report views can be found in the following locations:

- All global management components such as **Project Management** or **Co-ordinate System Management**.
- Project specific views such as the **Points** view, the **Antenna** view and the **Results** view.
- Within dialogue boxes such as **“View Data”** during import and the **“Mean”** page of the **Point Properties**.

The **Report View** is used throughout SKI-Pro thereby providing a consistent ‘look and feel’ and operating concept in all components.

Point Id	Point Class	Easting
<input checked="" type="checkbox"/> 9001	Measured	549054.6102
<input checked="" type="checkbox"/> 9002	Measured	549050.4151
<input checked="" type="checkbox"/> 9003	Measured	549045.7477
<input checked="" type="checkbox"/> 9004	Measured	549041.2279

Generic Functionality

The **Report View** contains functionality that is available in all locations where it has been utilised. Some of this functionality enables you to configure your installation in an optimum way and personalise the views. Additionally, temporary changes to a view can be desirable before a view is printed or saved to an ASCII file.

All functionality related to configuring the views are accessed via the **column header** and its associated context menu:

Hiding and viewing columns

In all of the report views, you can choose to **“View”** or **“Hide”** columns as required.

To hide a column, simply right-click on the column and activate the **Hide** menu-item on the context menu. Hidden columns may be viewed again by selecting the required column under the **View** pop-up menu-item.



The **“View all”** and **“Hide all”** (V2.0) functionality, on the context menu, assists with configuring a view quickly.

Moving a Column

With SKI-Pro V2.0, the column positions can be moved. This is achieved by dragging and dropping the column heading.

Changing the Column Width

There are a number of ways to configure the column widths. The **Auto-arrange** option sets the column widths to the widest item (in the column heading or data item). Alternatively pressing **Ctrl +** arranges the widths of all the columns according to the widest data item. In addition, you can also set the width manually by dragging and dropping the column separator in the header.

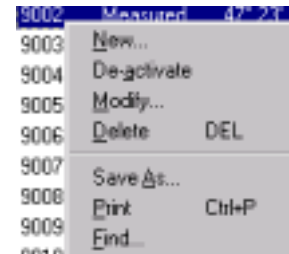
Sorting

It is possible to sort the data by a selected item by clicking on any column header. This can be especially useful to arrange the data in a convenient way.

For example, sort by coordinate quality to identify quickly points with lower quality or sort by **Code** or

Class, to group points according to their ‘type’.

The **Save As**, **Print**, and **Find** functionality are found in all report views via the context menu.



Save As

This enables you to save either the whole view or just selected rows of data to a comma, tab or space delimited text file. This can be a useful alternative for transferring data to a third party package.

Print

A direct printout of the view may be generated in a tabular form. This can serve as useful documentation to include in reports.

Finding specific text

The **Find** functionality will search for specific characters or words. It can be configured to search over the complete view or in a specific column.

Editing individual items

The **Modify** command can be used to edit specific items, such as the **Point Id**. Alternatively you may double-click on the item to edit it.

Remember...

- Configure the report views via the column header to personalise the view and present data in an optimum way for your requirements.
- Report views contain a lot of useful built-in functionality – try to make use of it!