

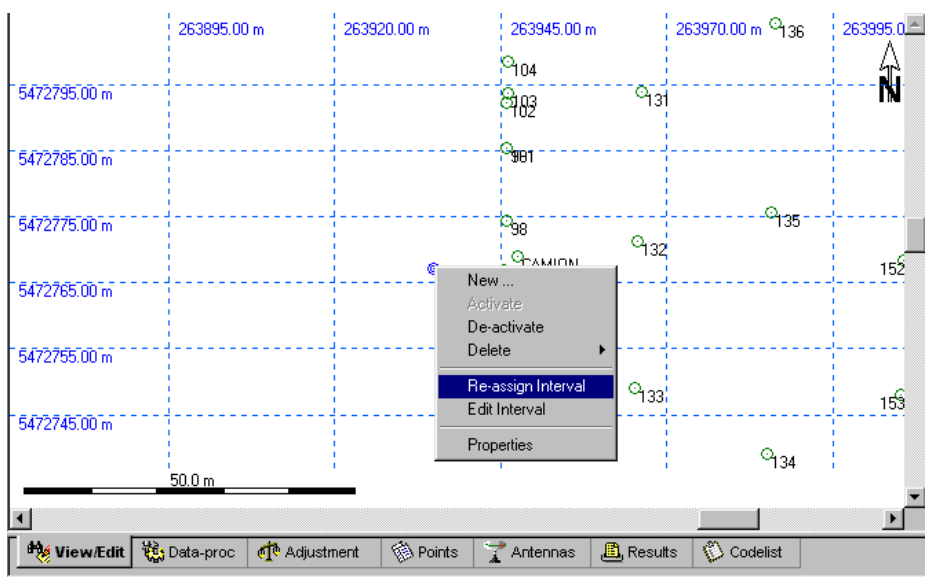
# Leica FAQ

***I mistakenly used the same point Id on two different points. How can I correct the error in SKI Pro so each point will have the correct point Id?***

**Answer:**

Note: This will work on both static and RTK data.

In Ski Pro, got to the **View/Edit** screen. Right click on the point you want to modify and select **Re-assign interval**.

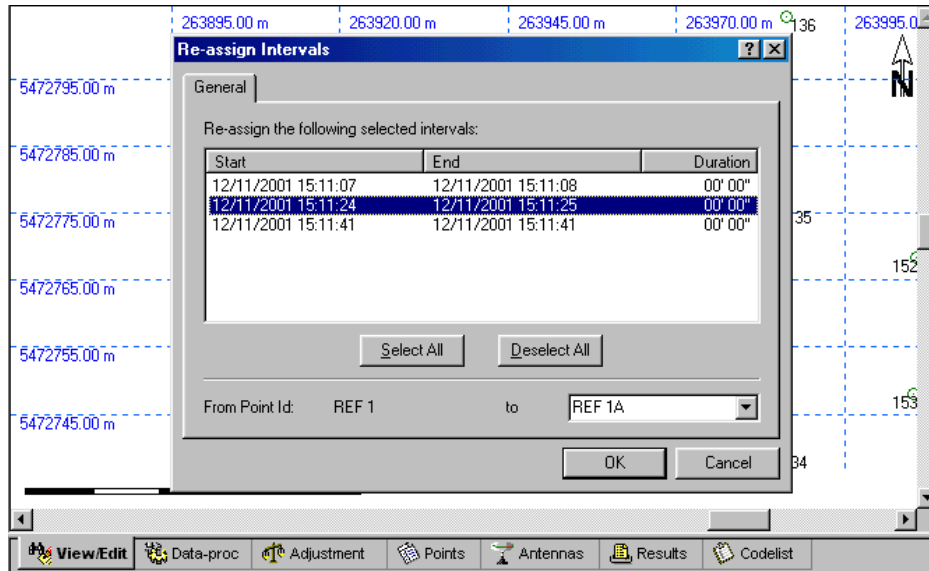


*Changing a Point ID*



A Re-assign Intervals window will open and a list of measurement time intervals (start and end times) of that particular point Id will be displayed.

- Select the time interval you wish to change.
- Notice that the Point Id is displayed in the “From Point Id: to ” field in the lower-right-hand corner.
- In the “From Point Id: to ” field, enter the new point Id and click on the **OK** button.



You will now see the corrected point in the View/Edit Screen.