
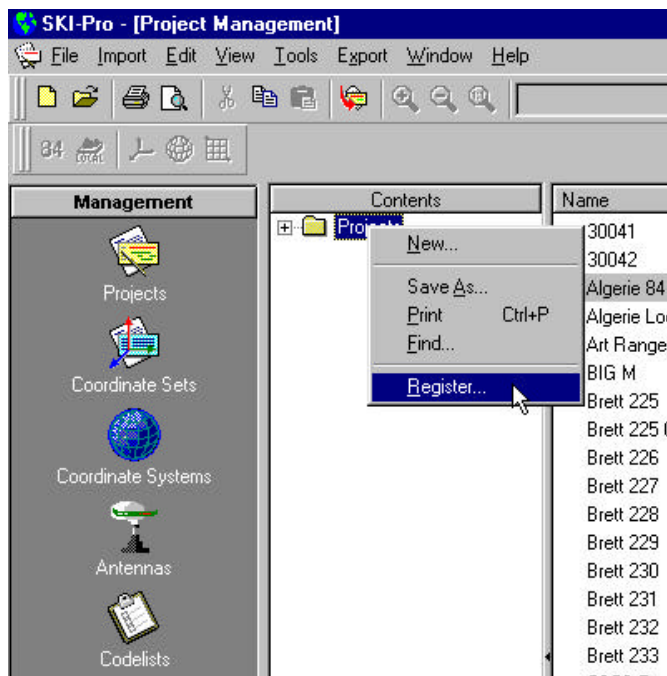


How do I transfer a SKI-Pro project from one computer to another?

Answer:

Use a file manager such as Windows Explorer to copy the folder containing the project and transfer (paste) the folder to the new computer. Then use **Register** to link the project to the SKIPro database.

1. From the **Tools** menu select **Project Management** or click on  from the **Management List Bar**.
2. Right-click anywhere in the Tree-View or Report View.
3. Select **Register...**
4. From the browser select the directory containing the Project to register.
5. Press **OK** to confirm or **Cancel** to abort the function.



Note: Never delete (from outside the SKIPro environment) any of the files contained in a Project directory. Otherwise the consistency of the database will be destroyed and an unrecoverable database error will result.