

How do I view orthometric heights in SKI-Pro?

Answer:

To view orthometric heights in SKI-Pro, you must first compute geoid separations. But to be able to compute geoid separations, you must have a geoid model attached to a coordinate system that is attached to a project.

To learn more about creating a coordinate system, click here:

http://www.leicaatl.com/support/gps/gps_faqs/faqs/SKI_Pro_Questions/State%20Plane.pdf

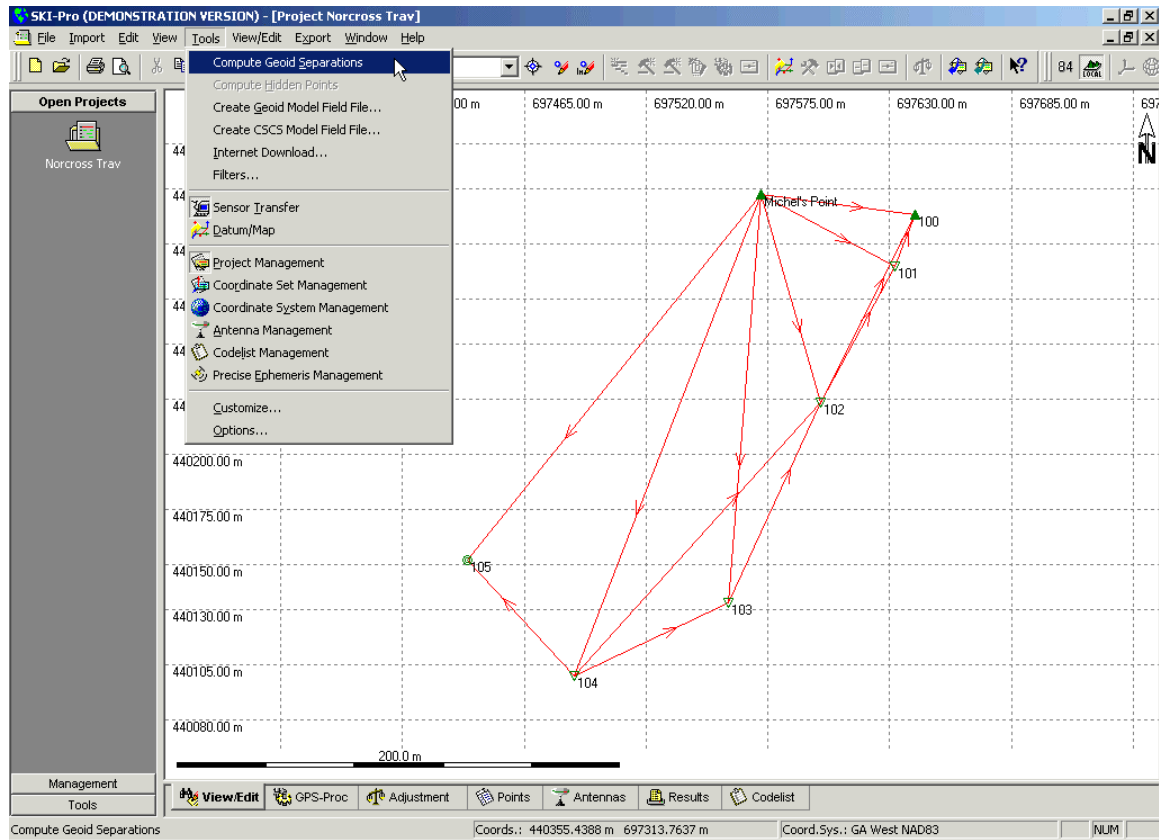
To learn more about attaching a coordinate system to a project, click on this link:

http://www.leicaatl.com/support/gps/gps_faqs/faqs/SKI_Pro_Questions/How%20Do%20I%20Attach%20a%20Coordinate%20System%20to%20a%20project.pdf

After you have attached a geoid model to a coordinate system and then attached that coordinate system to a job, you may now compute the geoid separations. After computing the geoid separations, go to the points screen. Here you can view the computed geoid separations and orthometric heights.

Proceed to the next page to see how to compute orthometric heights.

How to compute Orthometric heights in SKI-Pro



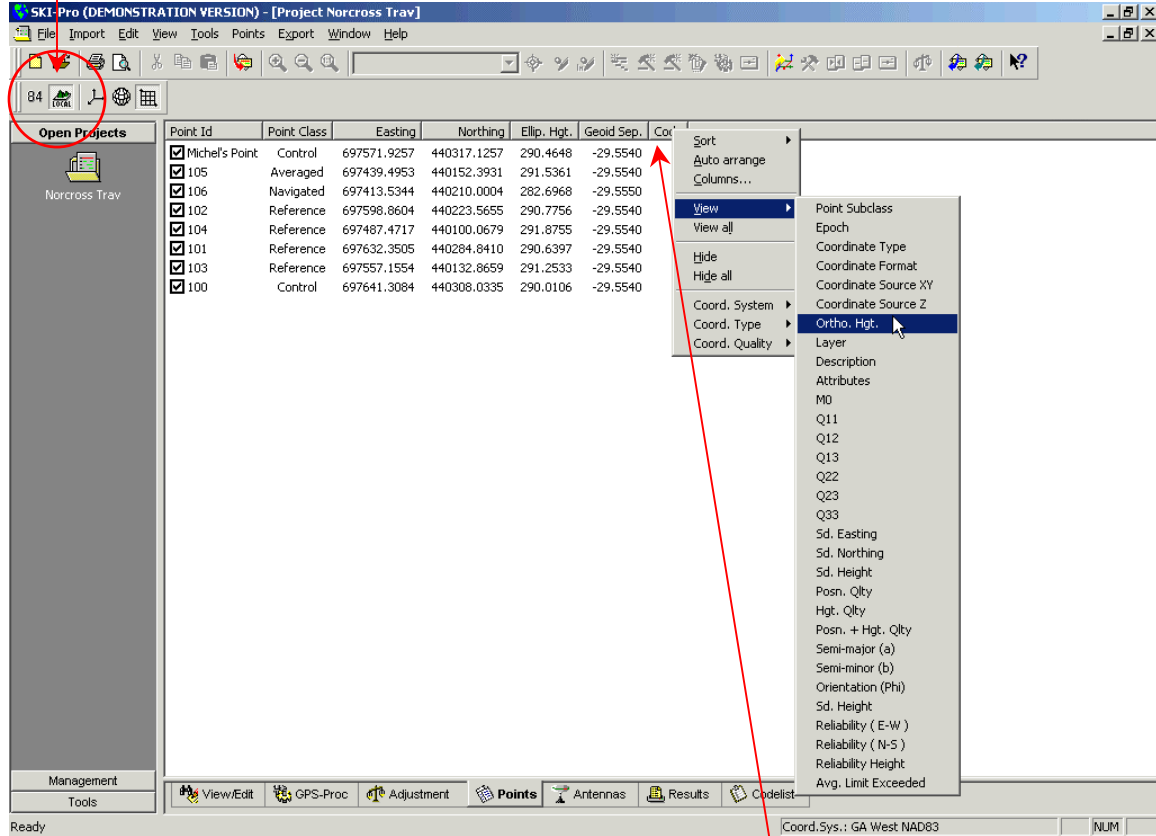
Go to Tools and select Compute Geoid Separations (see above).

After computing the geoid separations, go to the Points screen. Make sure you have the Local icon pressed (see on following page).

Viewing Orthometric Heights in SKI-Pro



Local Icon



If geoid separations are not displayed, you may need to turn on that view.

- Go to the column headings and right-click on one.
- Select View from the pop-up window.
- Select Ortho. Hgt. from the choice list.