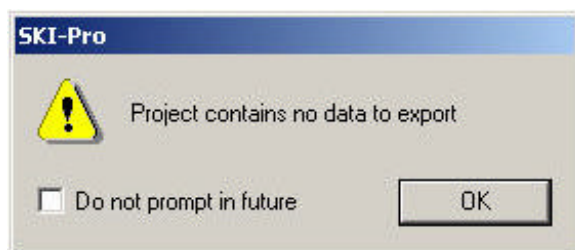


In SKI-Pro when I try to do an ASCII export of all my points in a grid format I get a “Project contains no data to export” message. Why?

Answer:

When you export a project in a grid format you must have a coordinate system attached to the exported data. If you did not attach a coordinate system to your project or did not attach a coordinate system to your exported points, you will see the following warning.



The above message appears because the coordinate system attached to your project is a geodetic system and with a geodetic system, there are no grid coordinates. Attach a proper coordinate system to your project that will convert your coordinates to grid coordinates.

Go to http://www.leicaatl.com/support/gps/GPS_Archives_FAQs.htm and view the FAQs on creating and attaching a coordinate system.