

Leica FAQ

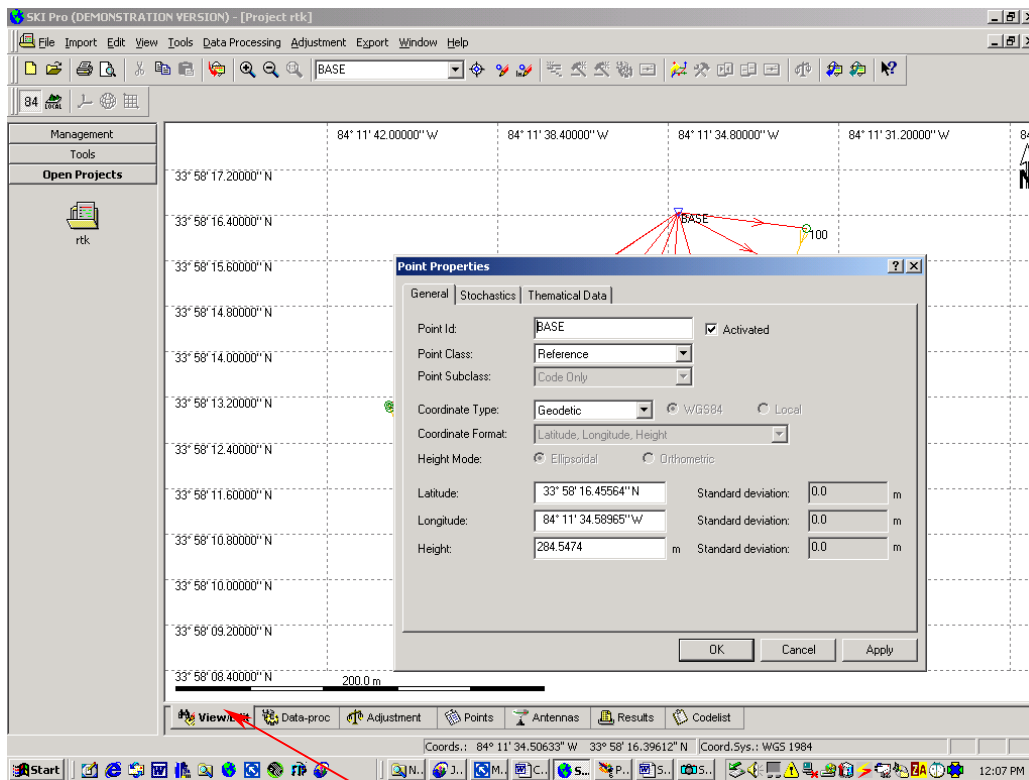
I entered the incorrect RTK base station position, how can I correct it in SKI-Pro?

Suppose during an RTK survey you made an error when entering the base station coordinates or you used the “Here” or “Single Point Position” function at the reference station. Now you’ve downloaded your data into SKI-Pro and you want to use the correct real-world coordinates at the reference station.

How can you change the base station’s coordinates and have all the rover points move accordingly?

Answer:

Note: This only applies to SKI-Pro versions 2.0 and higher.



In SKI-Pro, go to the View/Edit screen (see above):

Changing the Base Station's Coordinates

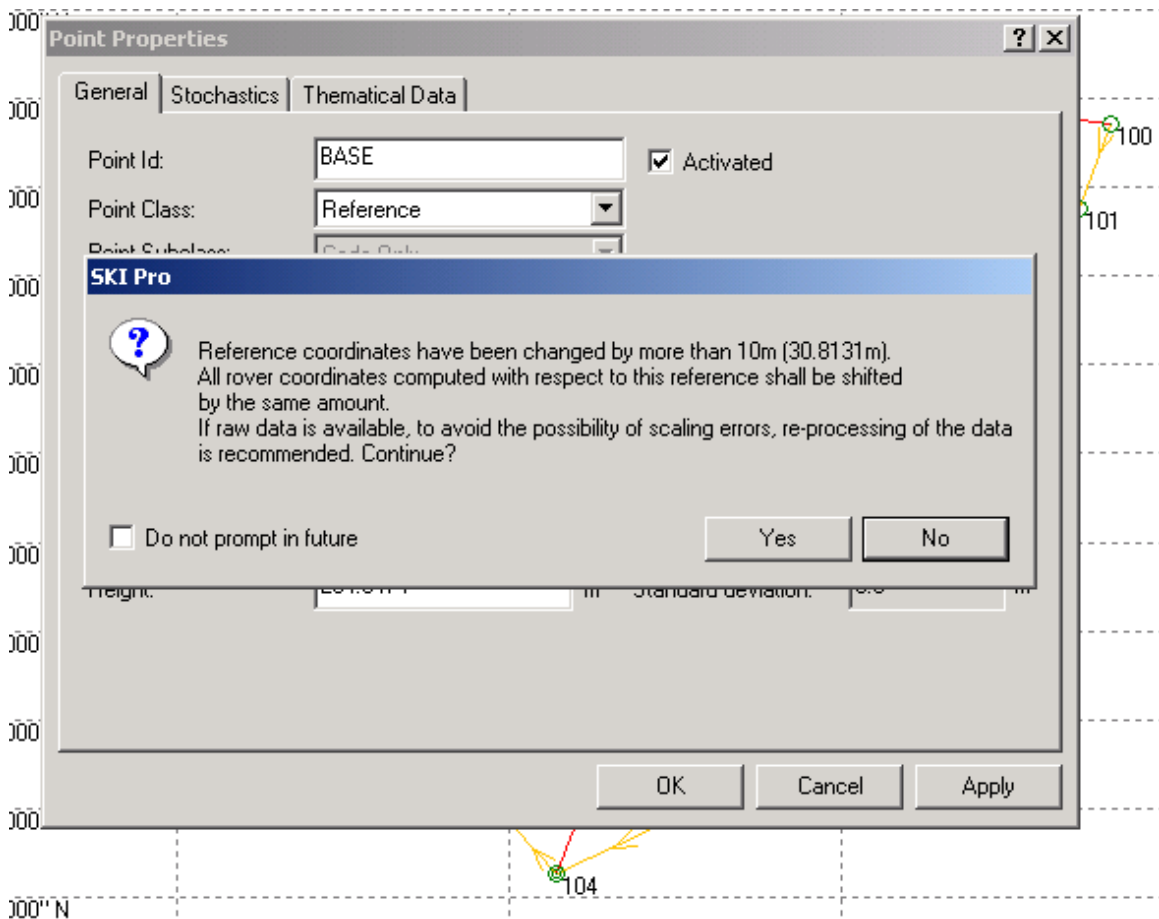


Continuing in the SKI-Pro View/Edit screen:

- Right-click on the reference (base station) point.
- Select Properties.
- A Point Properties window will open.
- Enter the correct reference coordinates.

Important: Make sure the Point Class is **Reference**.

- When finished, press the **Apply** button.
- Notice a new warning window opens (see below).



This window alerts you that the Reference coordinates have changed and the rover coordinates will be shifted. If the shift is acceptable, press the **Yes** button then press the **OK** button.